

# EL-2623

## Wireless Siren

### INSTALLATION GUIDE



Electronics Line 3000 Ltd.

## Introduction

The EL-2623 is an indoor wireless siren designed for use with the *infinite* control panel. To support the EL-2623 indoor siren, the *infinite*'s Main board must have the optional plug-in transmitter installed.

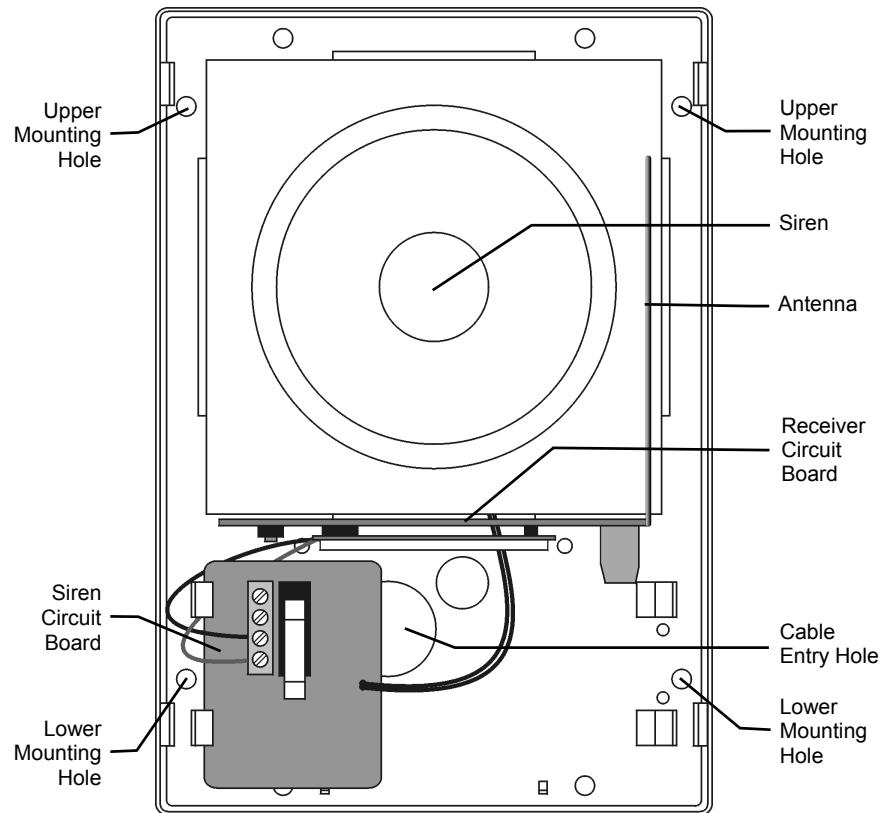


Figure 1: EL-2623 (cover off)

## Installation

**WARNING:** Wear hearing protection when installing the siren.

1. Using a small screwdriver, pry open the housing and lift the front cover away from the back cover.
2. Connect a 12V AC-DC transformer to the power input terminal block on the Receiver circuit board as shown in Figure 2. Thread the wires from the outside of the unit via the cable entry hole.
3. To support the EL-2623, the *infinite*'s Main board must have the on-board transmitter installed. Plug the on-board transmitter into the *infinite* control panel's Main board as shown in Figure 3.

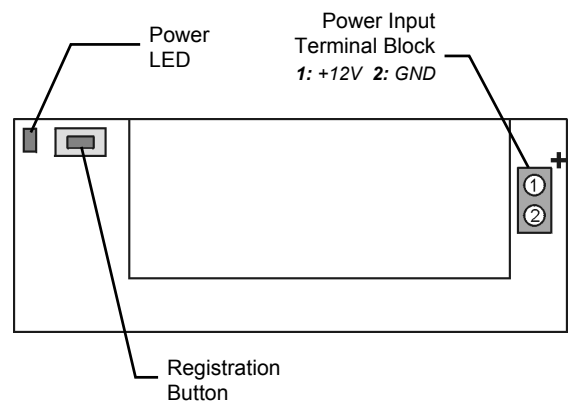


Figure 2: Receiver Circuit Board

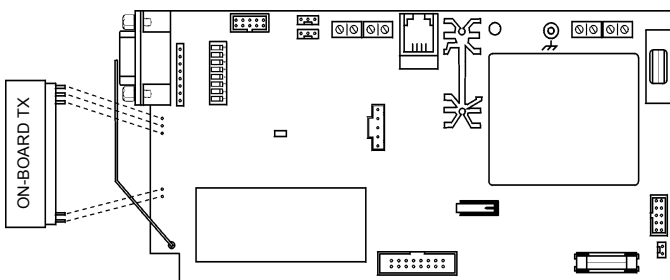


Figure 3: Plugging in the On-Board Transmitter

4. On the control panel, define the siren type as "1-Way Siren" as follows:
  - From the Programming menu, select Devices, Siren, Ext. Siren Type [9152].
  - Select "1-Way Siren".
5. Define the Siren Cut-off as follows:
  - From the Programming menu, select Devices, Siren, Cut-Off [9154].
  - Enter a siren cut-off time (00:10 - 20:00 minutes).

6. On the Receiver circuit board, clear the transmitter register by pressing and holding down the Registration button; the Power LED turns off. Continue holding down the button until the Power LED is re-lit.
7. On the Receiver circuit board, press the Registration button once to set the EL-2623 to Registration mode; the Registration LED is turned off— see *Figure 2*.
8. On the control panel, perform the External Siren Test in order to register the control panel's transmitter to the EL-2623's receiver.

**Note:** During the registration procedure, make certain that no other wireless devices are transmitting so as not to interfere with the registration procedure. In the event that the wrong transmitter is registered to the receiver, you can delete the transmitter as explained below in *Deleting the Registered Transmitter*.

To perform an External Siren Test:

- From the Service menu, select Ext. Siren Test [702].

When the first transmission is received, the Registration LED on the receiver switches off. After the second transmission is received, the LED flashes. When the LED stops flashing (steady LED), the registration procedure is complete.

9. Choose a suitable mounting position for the siren.
10. Before permanently mounting the siren, test the reception from the exact mounting position. If necessary, relocate the siren to a better position.
11. To mount the EL-2623, place the back cover in position against the wall and mark the upper and lower mounting holes. Install wall anchors in the appropriate positions and mount the back cover using four screws.
12. Replace the front cover making sure that it clicks into place.

### ***Deleting the Registered Transmitter***

---

In certain cases, it may be necessary to delete the registered transmitter in order to allow the registration of a new transmitter. To delete a registered transmitter:

1. Press and hold down the Registration button; the Power LED turns off.
2. Continue to hold down the Registration button until the Power LED is re-lit; the registered transmitter is deleted.

### ***Technical Specifications***

---

Receiver Frequency: 868.35MHz, 433.92MHz  
or 418MHz FM

Antenna: Built-in internal whip

Operating Voltage: 12V (nominal)

Current Consumption: 800mA (alarm)  
50mA (standby)

Siren Output: 110dB @ 1m

Operating Temperature: 0-60°C

Dimensions: 160 x 110 x 50mm



**Electronics Line 3000 Ltd.**

Web: [www.electronics-line.com](http://www.electronics-line.com)

**International Headquarters:**

***Electronics Line 3000 Ltd.***

2 Granit St.

Kiryat Arie Industrial Zone

POB 3253

Petah Tikva 49130 Israel

Tel: (+972-3) 918-1333

Fax: (+972-3) 922-0831

***Electronics Line USA***

5637 Arapahoe Avenue

Boulder, CO 80303

Tel: (800) 683-6835

Fax: (303) 938-8062

***ESP - Electronics Line UK***

Unit 7, Leviss Trading Estate

Station Road, Stechford

Birmingham B33 9AE

Tel: (+44-121) 789-8111

Fax: (+44-121) 789-8055

***Sectec - Electronics Line France***

Zi 61 Rue du Marche Rollay

94500 Champigny Sur Marne

Tel: (+33-1) 45.16.19.20

Fax: (+33-1) 45.16.19.29



All data is subject to change without prior notice. In no event shall Electronics Line 3000 Ltd. (EL3K) be liable for an amount in excess of EL3K's original selling price of this product, for any loss or damage whether direct, indirect, incidental, consequential or otherwise arising out of any failure of the product.

Hereby, Electronics Line 3000 Ltd. declares that this siren is in compliance with the essential requirements and other relevant provisions of Directive 1999/5/EC.